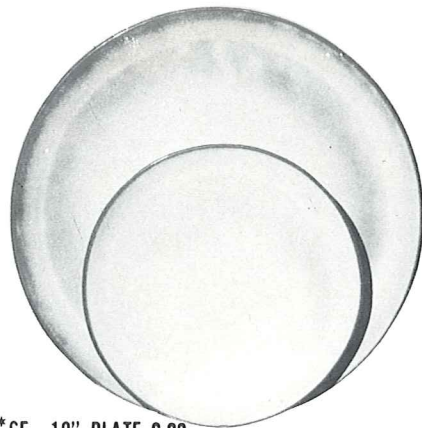




4K—BUTTER DISH  
6.50



\*6F—10" PLATE 6.00

\*6G—7" PLATE 3.50



6B—SUGAR WITH LID  
5.00

6AB—CREAM & SUGAR SET  
8.00



6A—9 OZ. CREAMER  
3.25

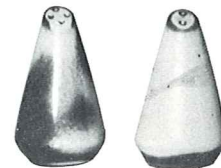


6U—18 OZ. BAKER FOR TWO  
A COVERED CANDY DISH 6.50



\*6C—CUP 3.25

\*6E—5" WELLED SAUCER 2.75



6H—SALT & PEPPER  
4.75



6VS—1 1/2 QT. BAKER 9.25  
6VS/W BAKER & WARMER SET 16.50



5LC—6 OZ. JUICE 3.25



5L—12 OZ.  
TUMBLER  
3.75



81—1 QT. PITCHER 6.50



249 TACO HOLDER  
BOXED 2 PER BOX 10.00  
Not Available in Flame



6V—2 1/2 QT. BAKER 13.25  
6V/W BAKER & WARMER SET 20.50



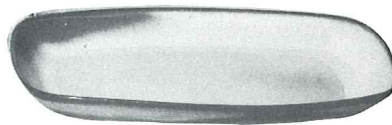
6T—6 CUP TEAPOT 9.25



80—2 QT. PITCHER 9.25



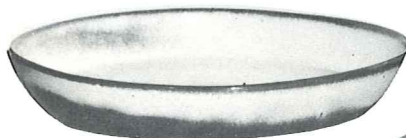
6J—2 CUP TEAPOT  
6.50



5QS—13" STEAK PLATE (SHALLOW PLATTER) 5.00

6P—11" STEAK PLATE 4.50

5PS—9" TRAY 3.75



91—10" BAKING DISH  
4.75



X0—3 OZ.  
SINGLE SERVING  
BOWL 1.50



6N—1 QT. BOWL  
4.75



6X—14 OZ. CHILI SOUP 3.25  
6XS—10 OZ. FRUIT 2.75



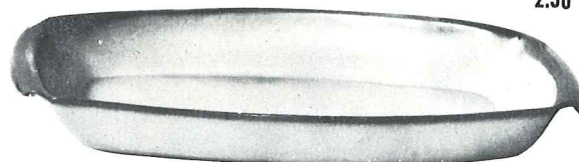
6S—2 SPOUT GRAVY  
6.50



242  
2.50 CORN DISH

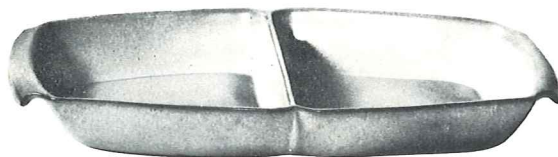


243—6 1/2" CRESCENT SALAD  
2.50



17.50  
5P—17" DEEP PLATTER

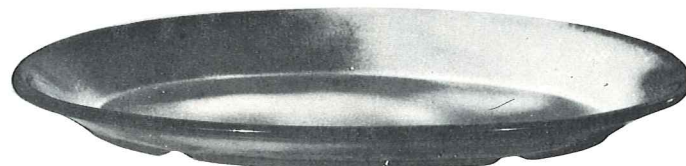
7.75  
5Q—13" DEEP PLATTER



5QD—13" DIVIDED BOWL  
7.75



BP—6 OZ. BEAN POT  
OR CUSTARD  
2.75



TP—17" OVAL PLATTER  
17.50

THIS PAGE AVAILABLE IN 8 STANDARD COLORS PLUS COFFEE BROWN AND NAVY BLUE — EXCEPT WHERE NOTED. ADD 50% FOR FLAME.

\* Not Available in Desert Gold, Brown Satin, Coffee Brown and Flame